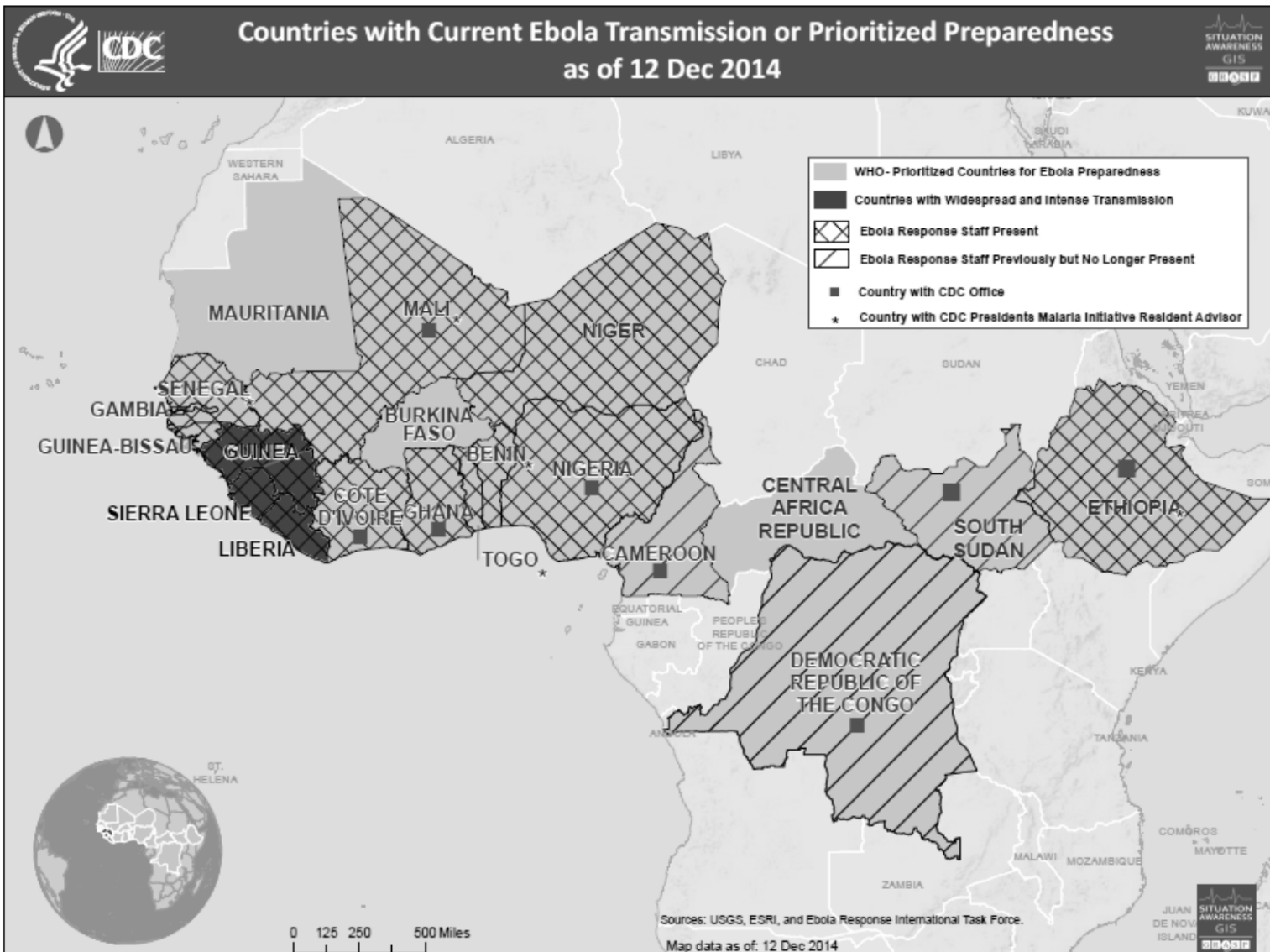


Ebola Preparedness – Senegal, January, 2015

Jean-Marie Maillard, MD, MSc
Medical Consultation Unit Director
Communicable Disease Branch
North Carolina Division of Public Health

Ebola Preparedness – Senegal, January, 2015

- Wake AHEC requires all speakers to disclose any relevant financial conflicts of interest.
- Jean-Marie Maillard has no relevant financial conflicts of interest to disclose.

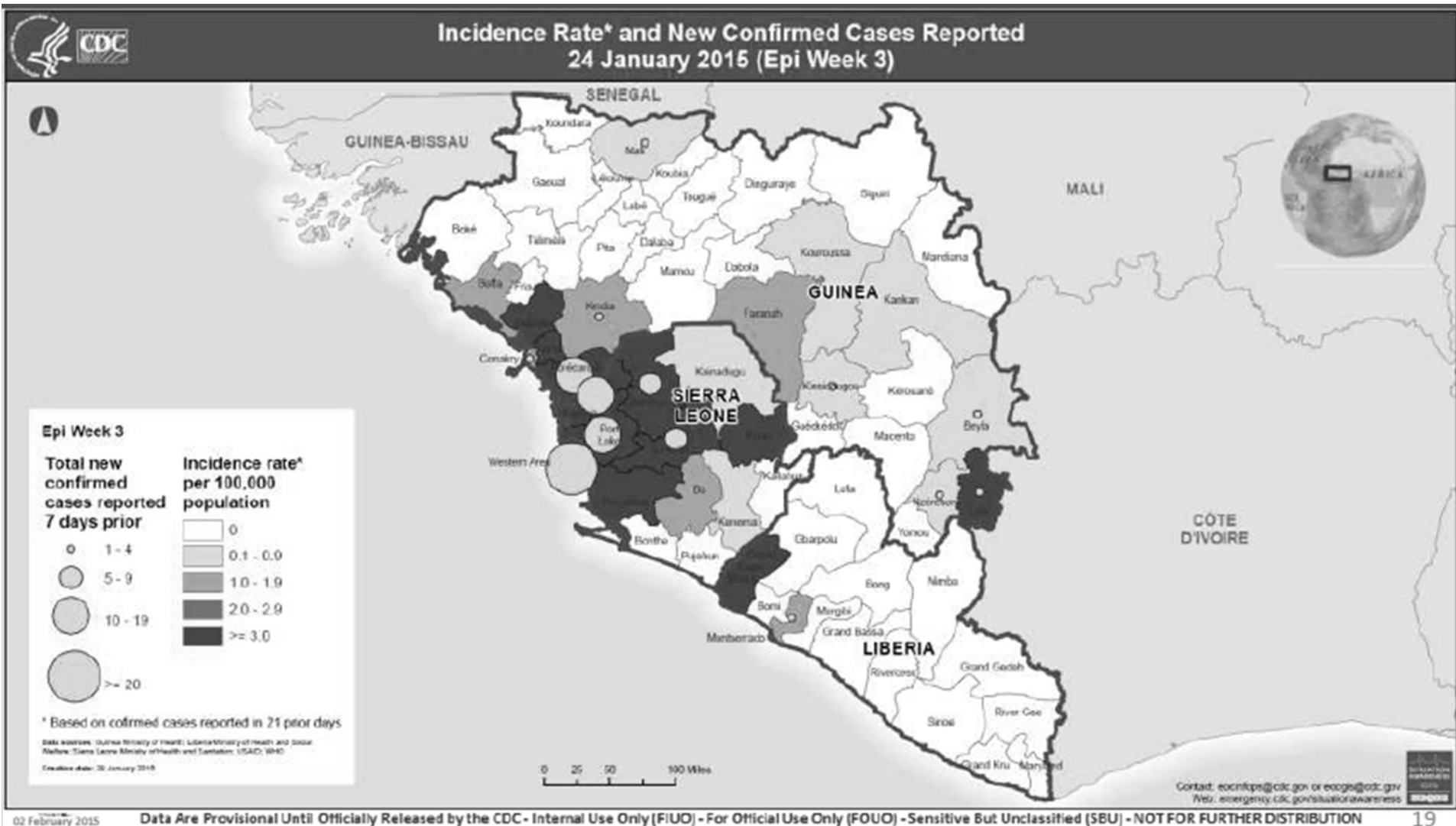


CDC has identified 13 priority countries for assistance. The highest priorities are Guinea Bissau, Cote d'Ivoire, Senegal, Mali, and Ghana; based upon their proximity to countries with widespread disease and air traffic. Others on the list include Niger, Mali, Mauritania, Burkina Faso, Nigeria, Cameroon, Gambia, and Democratic Republic of Congo.

Objectives

- Start **preparation for training sessions** to be offered by CDC for 50 field epidemiologists at District level. (Field Epidemiology Training Program – Surveillance Training for Ebola Preparedness, FETP-STEP.) Obtain WHO Resident staff support for partnership.
- **Explore ways to implement daily alert system** in the most exposed geographic areas.
- Review **guidance written for Ebola Virus Disease response and control** in Senegal, verifying that all protocols used in training (and response in case of introduction) are accurate, consistent, and aligned with WHO guidance.
- Participate in visit and **exercise led by US government consultants on Disaster Management**; in particular, emphasize for Ministry of Health leaders areas that will be essential for establishing its Emergency Operations Center.
- Work with the **Dakar Pasteur Institute** management to foster collaboration with CDC.
- As a result of contributing to Ebola preparedness, allow the CDC malaria resident advisor to refocus on malaria work.

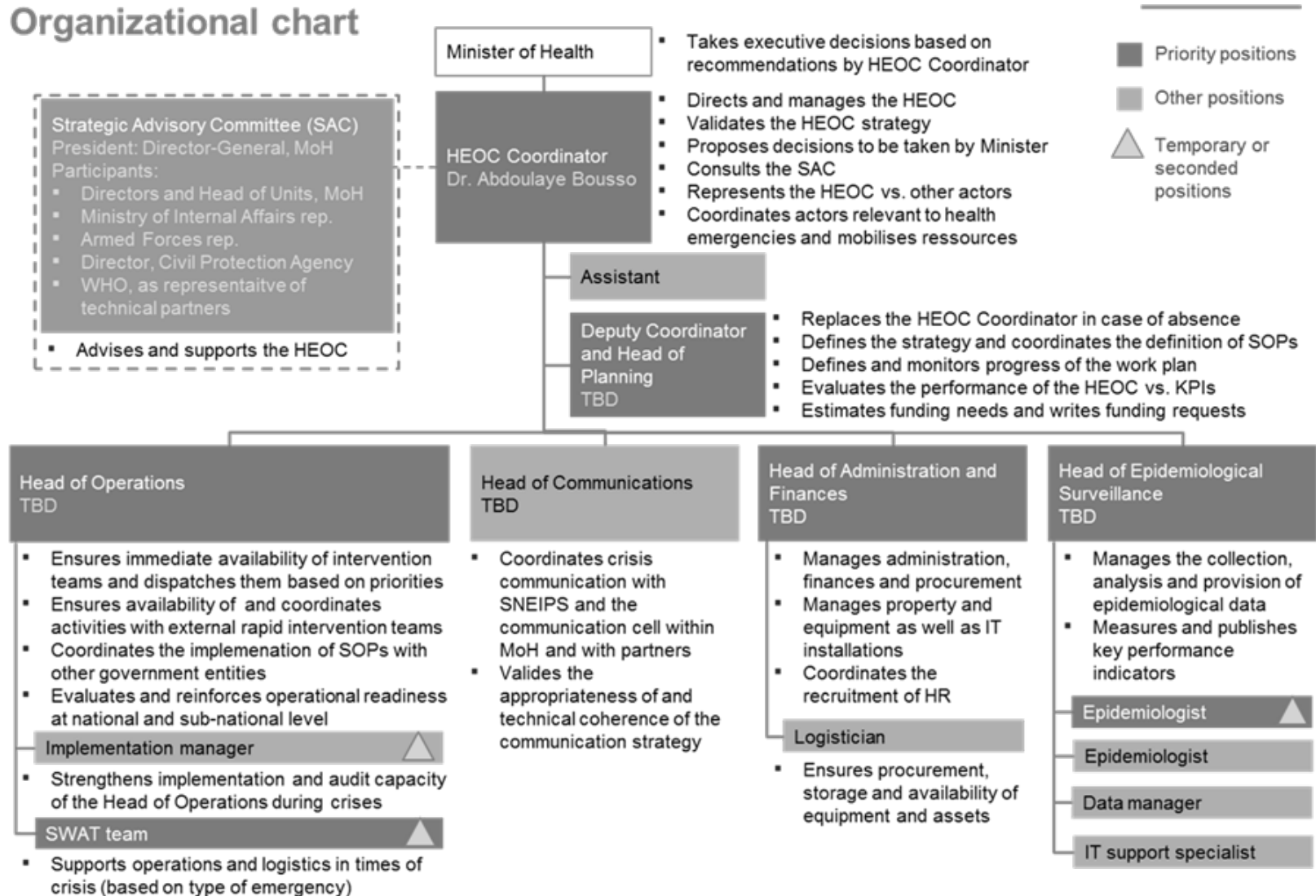
Weekly reports



Emergency Operation Center

Ministry of Health, Senegal, 1/2015

Organizational chart



“Ebola Protocols”

Senegal, January, 2015

Procédures d’opérations Normalisées – NOUVELLE NUMEROTATION

