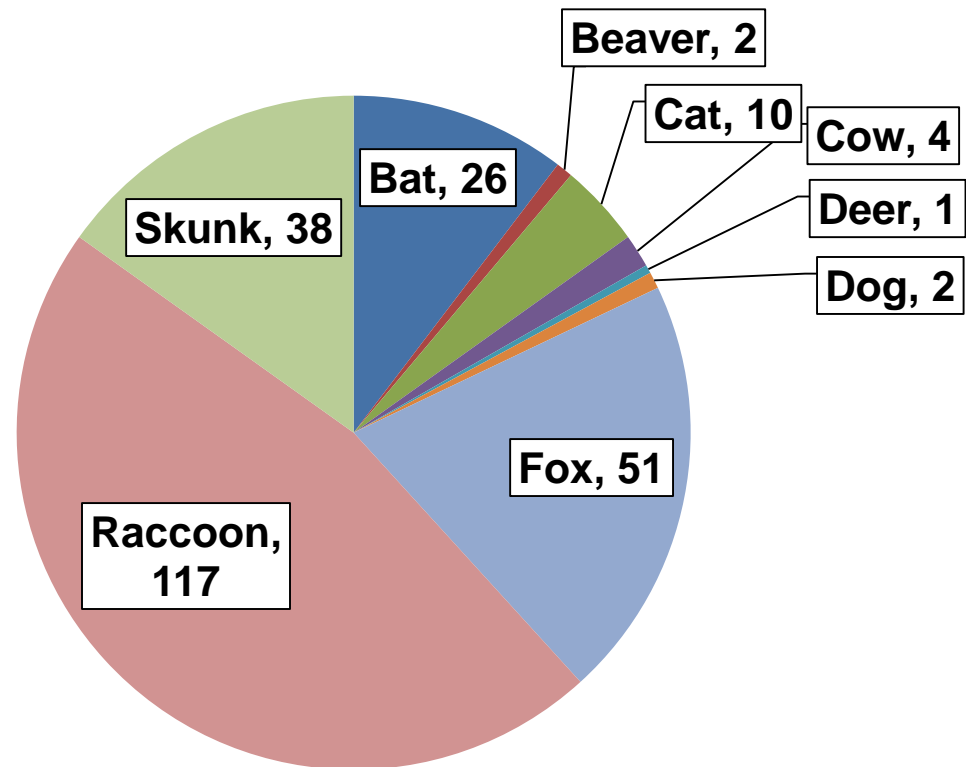


Rabies Positive Mammals and Percent Positivity by Species, North Carolina, 2016

Species	No. Positive	No. Tested	% Positive
Bat	26	946	2.75
Beaver	2	4	50.00
Cat	10	928	1.08
Cow	4	113	3.54
Deer	1	3	33.33
Dog	2	786	0.25
Fox	51	115	44.35
Raccoon	117	410	28.54
Skunk	38	59	64.41
Total	251	3596	6.98



Source: N.C. State Laboratory of Public Health
Data Accessed APR 2017