



NC DEPARTMENT OF
**HEALTH AND
HUMAN SERVICES**

ROY COOPER • Governor
KODY H. KINSLEY • Secretary
MARK BENTON • Deputy Secretary for Health
SUSAN KANSAGRA • Assistant Secretary for Public Health
Division of Public Health

October 26, 2022

To: Local Health Department Communicable Disease Nurses
From: TATP Nurse Consultants, Communicable Disease Branch (CDB)
Re: Ebola Virus Disease in Uganda

On September 20, 2022, the Ministry of Health of Uganda officially declared an outbreak of Ebola Virus Disease (EVD) due to Sudan virus (species *Sudan ebolavirus*) in Mubende District, Central Uganda. On October 11, the U.S. government began funneling travelers who had been to Uganda within 21 days of their arrival in the U.S. to five U.S. airports. The five airports are New York (JFK), Chicago (ORD), Atlanta (ATL), Washington D.C. (IAD), and Newark (EWR). Arriving travelers are screened for risk factors and signs/symptoms of EVD on arrival and will quarantine or isolate at the site of arrival if they are screened to be high risk for exposure to EVD. Basic information on travelers who screen as low or moderate risk is communicated to the public health jurisdiction for the traveler's final destination for appropriate follow-up and monitoring.

Criteria for low, moderate, or high risk is in CDC's updated [Interim Guidance on Risk Assessment and Management of Person with Potential Ebola Virus Exposure](#). We want to share this guidance with you and provide additional details on monitoring and management of travelers arriving in North Carolina who have traveled in Uganda.

CDB Actions

- CDB will notify LHDs of any travelers that are destined for their jurisdiction via email. The email will come from the Movement Monitoring and Notification Team (MMN).
- CDB has created an outbreak event in NCEDSS – 103545506 – where the LHD can find the Excel file as an attachment containing specific traveler information. Instructions on how to access the file will be included in initial traveler alert emails to LHDs.
- CCTC staff will conduct initial interviews and risk assessments with travelers and conduct recommended monitoring, unless the LHD notifies MMN that they opt out of this CCTC support. The script being used by CCTC to screen travelers is available [here](#). Once CCTC has conducted the screening, they will email the LHD alerting them the assessment has been completed.
- CDB Epi On Call staff will notify the LHD immediately if any travelers are determined to be high-risk or if travelers under monitoring develop symptoms. Notification will include a phone call to the local health department and an email to the CD nurses, DON and Health Director, and will precede setting up a coordination call between the LHD and CDB

NC DEPARTMENT OF HEALTH AND HUMAN SERVICES • DIVISION OF PUBLIC HEALTH

LOCATION: 225 North McDowell St, Raleigh, NC 27603
MAILING ADDRESS: 1902 Mail Service Center, Raleigh, NC 27699-1902
www.ncdhhs.gov • TEL: 919-733.7301 • FAX: 919-733-1020

AN EQUAL OPPORTUNITY / AFFIRMATIVE ACTION EMPLOYER

LHD Actions

- In preparation for potential response to a high risk or symptomatic traveler, Epi Team should:
 - Review and update LHD EVD response plan
 - Communicate with community partners (hospitals, providers, EMS, other first responders) to ensure EVD information, resources, and response plans are up to date
 - Ensure the LHD communicable disease 24/7 contact information is up to date with your TATP nurse in the event a high-risk or symptomatic traveler is identified
- If the LHD does not opt out, CCTC will conduct all initial interviews, risk assessments, and subsequent monitoring.
- If the LHD has decided to opt out of CCTC support in conducting traveler risk assessments and monitoring by emailing MMN at MMN.Team@dhhs.nc.gov . If opting out of CCTC support the LHD will be responsible for ALL of the following:
 - perform risk assessment in accordance with CDC guidance, above
 - perform monitoring of the traveler in accordance with CDC guidance, above. LHD may use the template symptom monitoring log located here: <https://epi.dph.ncdhhs.gov/cd/ebola/EbolaSymptomMonitoringLog2022.pdf>
 - Utilize the REDCap survey (link to be sent after MMN team has been notified of LHD intent to opt out) to enter traveler information and monitoring updates.
 - Notify Epi On Call at 919-733-3419 **immediately** if a high-risk traveler is identified, or if any traveler under monitoring develops symptoms. This will prompt a coordination call between the LHD and CDB.

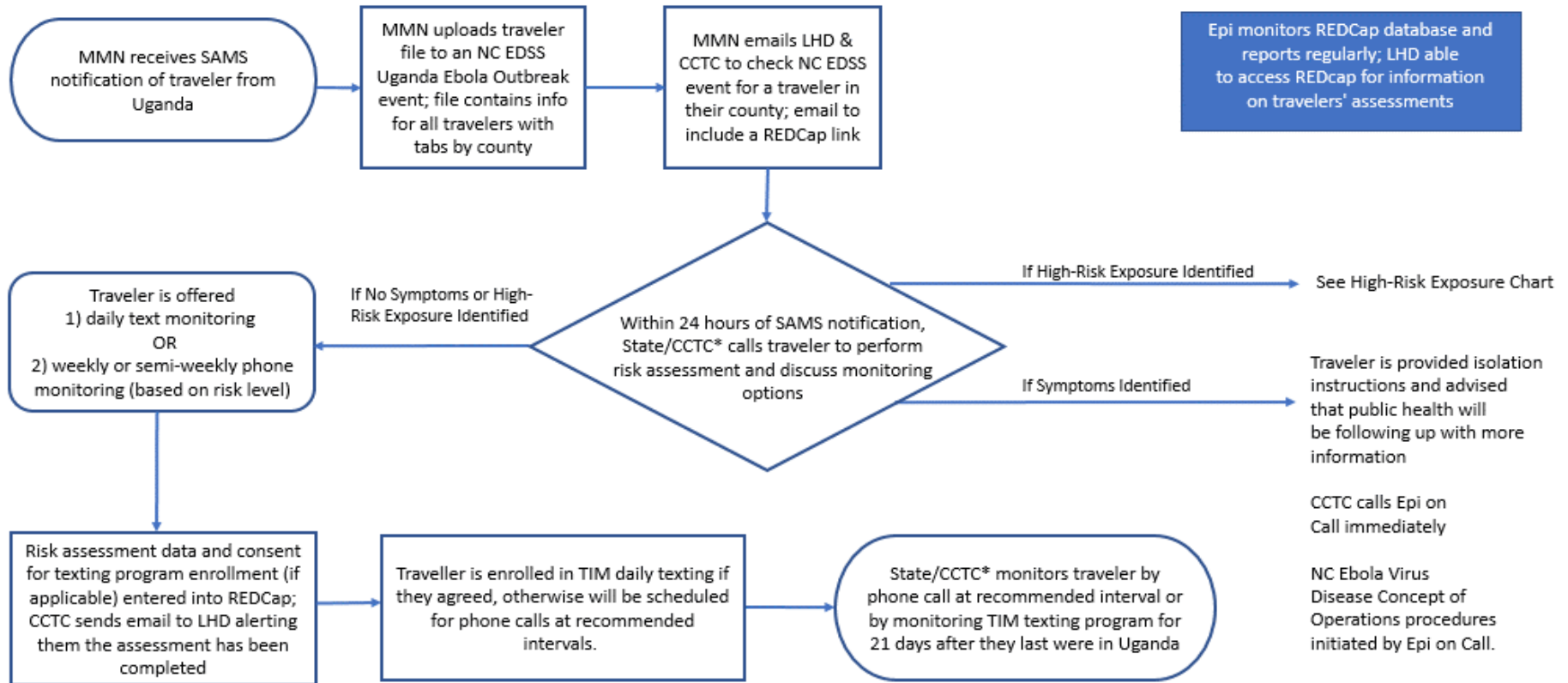
See the attached algorithm for a quick view of the traveler notification process.

If there are any additional questions regarding any of these steps, please contact the Communicable Disease Branch at 919-733-3419.



NC DEPARTMENT OF HEALTH AND HUMAN SERVICES

ROY COOPER • Governor
KODY H. KINSLEY • Secretary
MARK BENTON • Deputy Secretary for Health
SUSAN KANSAGRA • Assistant Secretary for Public Health
Division of Public Health



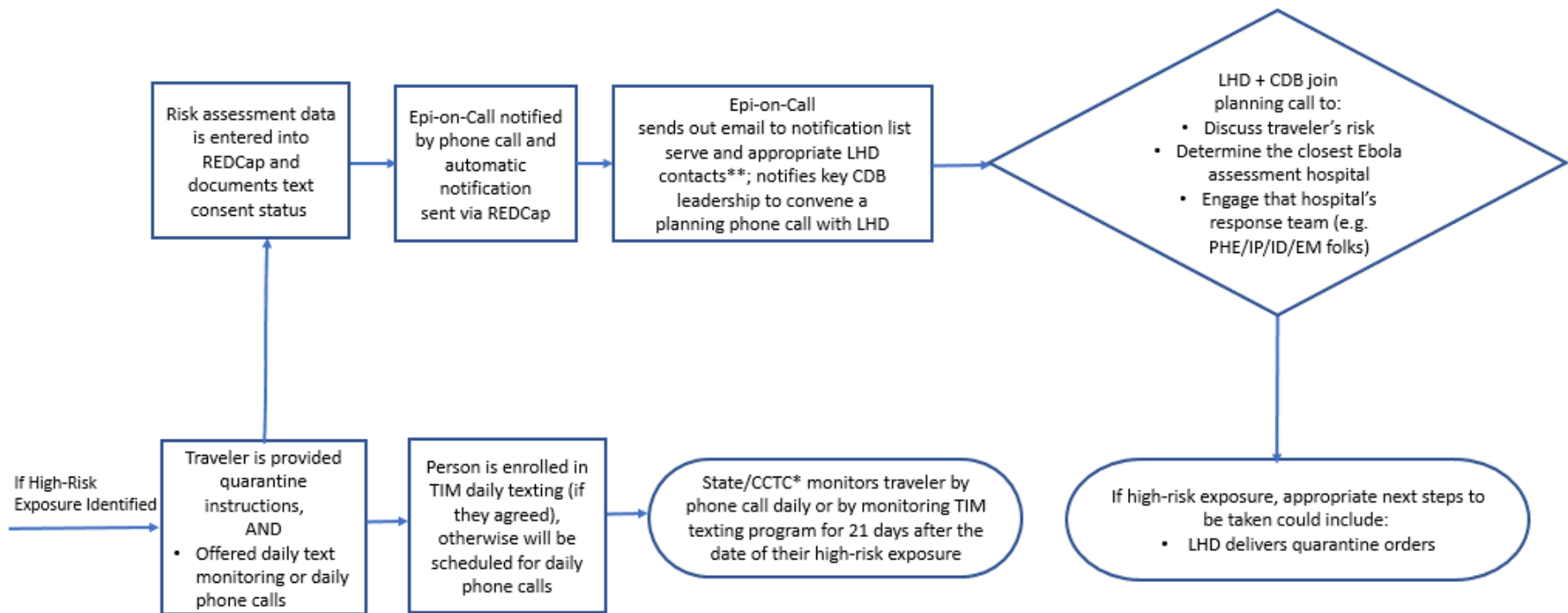
Epi monitors REDCap database and reports regularly; LHD able to access REDCap for information on travelers' assessments

* If an LHD would prefer to do this outreach, they need to express that by email to mmn.team@dhhs.nc.gov otherwise it will automatically be done by the State/CCTC

NC DEPARTMENT OF HEALTH AND HUMAN SERVICES • DIVISION OF PUBLIC HEALTH

LOCATION: 225 North McDowell St, Raleigh, NC 27603
MAILING ADDRESS: 1902 Mail Service Center, Raleigh, NC 27699-1902
www.ncdhhs.gov • TEL: 919-733.7301 • FAX: 919-733-1020

AN EQUAL OPPORTUNITY / AFFIRMATIVE ACTION EMPLOYER



* If an LHD would prefer to do this outreach, they need to express that by email to mmn.team@dhhs.nc.gov otherwise it will automatically be done by the State/CCTC

**LHD Contacts to include CD nurse, Health Director, DON, PC